

MDL Progress Report October 2020

During the past weeks, the MDL exploration team, continued the search for new sites along the license and managed to track few recently started artisanal workings.

These workings are taking place along the Lurio river bed, with a daily increase of local workers, justified by the amounts of gold being found.

We also continued our exploration work in Chapala Site, seeking to intercept higher grade zones, have better understanding possible of the mineralization strike and select next possible sampling targets for lab submission.

The updated map with the known Alluvial and Hard Rock Sites

Blue – Hard Rock QV
Orange – Alluvial



Image © 2020 Maxar Technologies
Image © 2020 CNES / Airbus
© 2020 Google

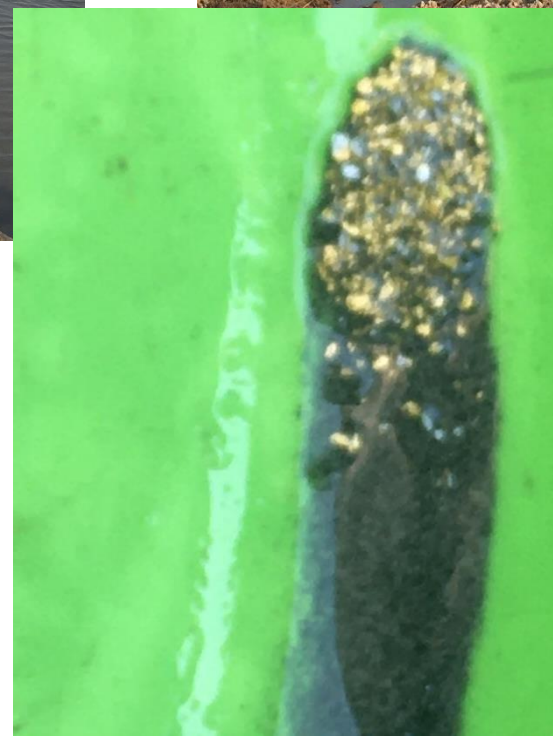
Google Earth

Artisanal Workings on the Lurio River Bed – Siripa Village



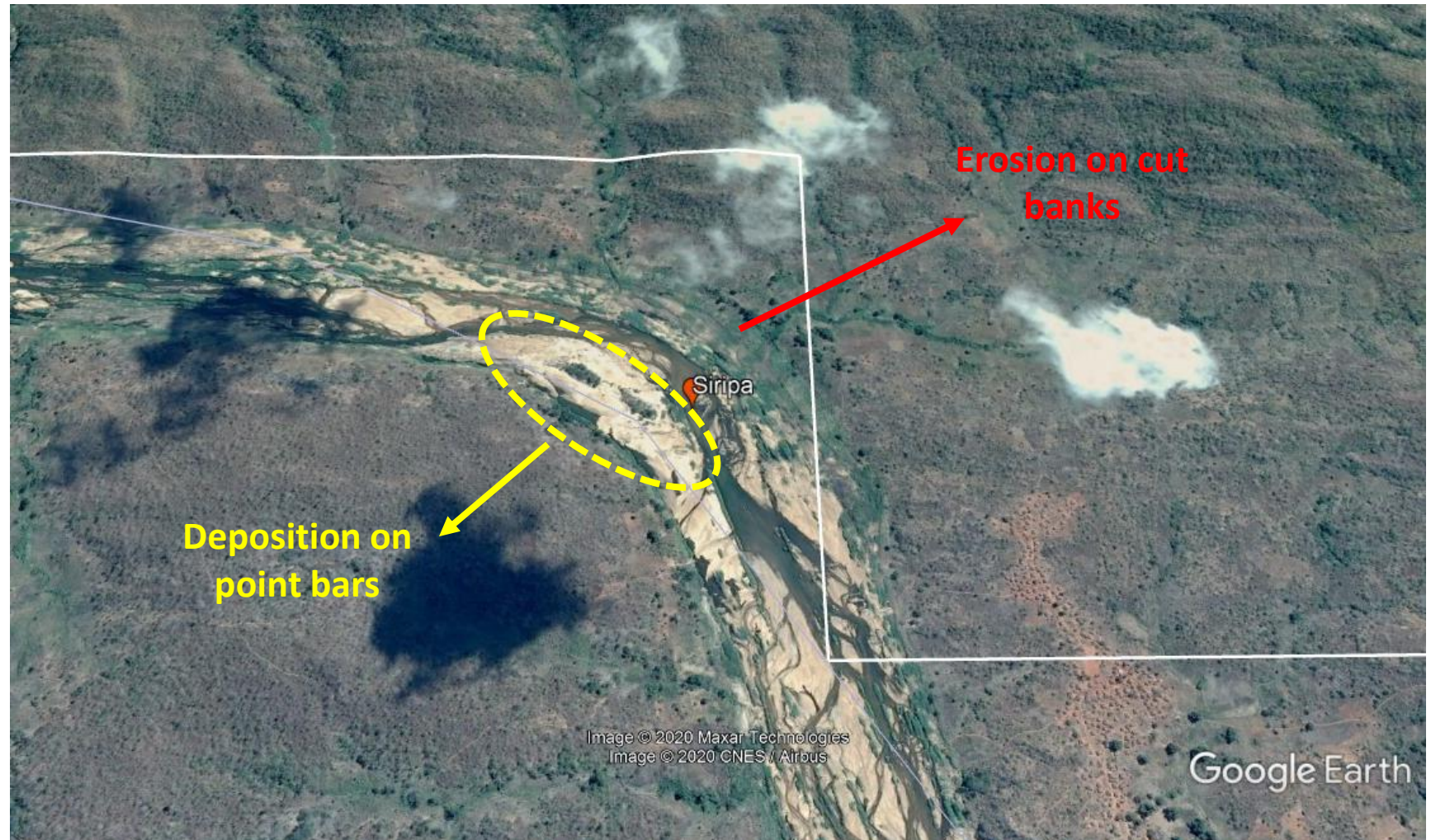


Gold flakes with black sand, suggest a close primary source.



Artisanal Workings on the Lurio River Bed – Siripa Village

The on going activity in Siripa, can be referred to as a acumulation (Alluvial Placer) inside the meander loop, which is described by a slow water current on the curves of the river streams, conditioning erosian on the cutbanks and deposition on point bars.



Artisanal Workings on the Lurio River Bed – Nehanihani Village



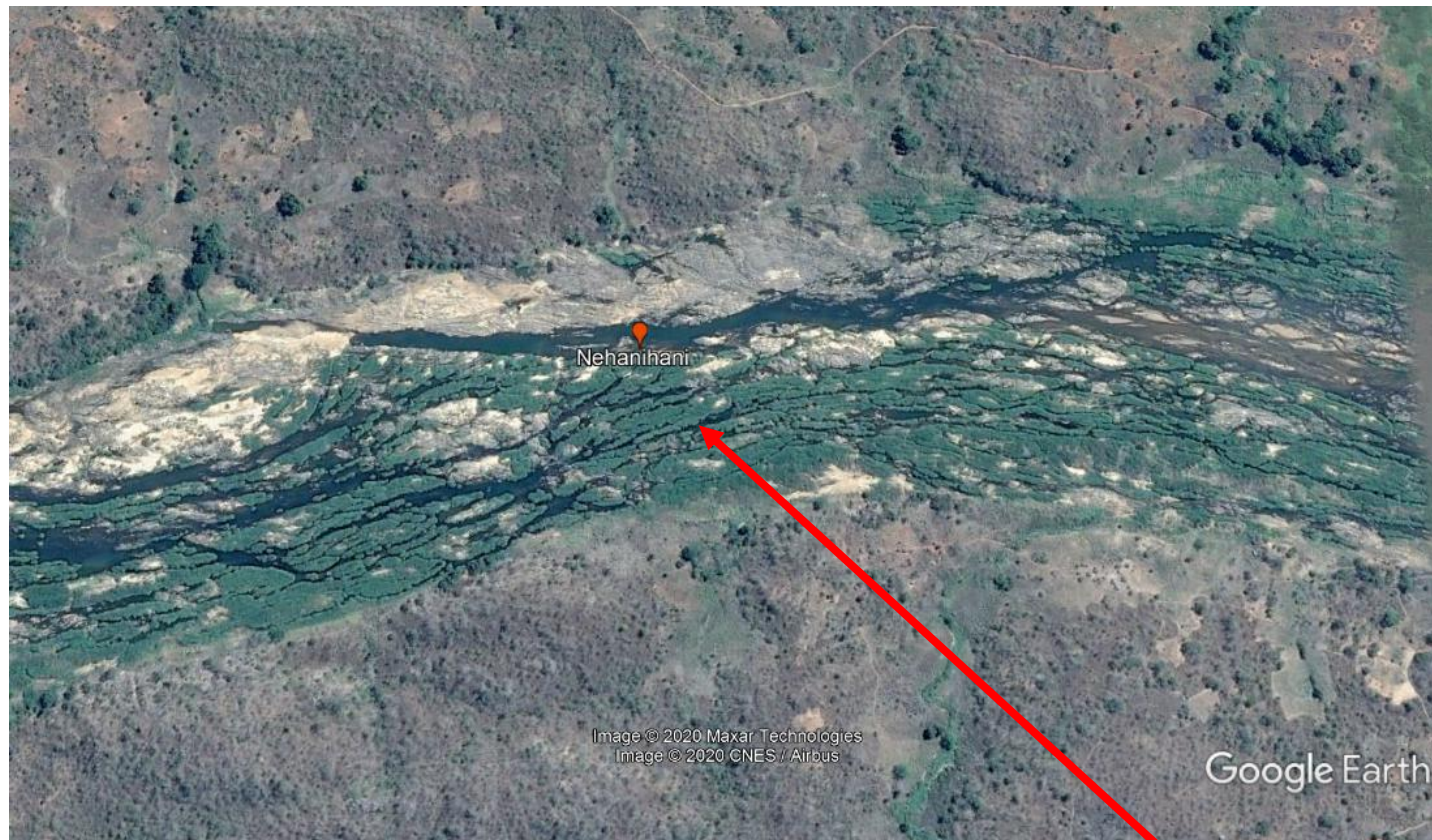


Artisanal Workings on the Lurio River Bed – Nehanihani Village

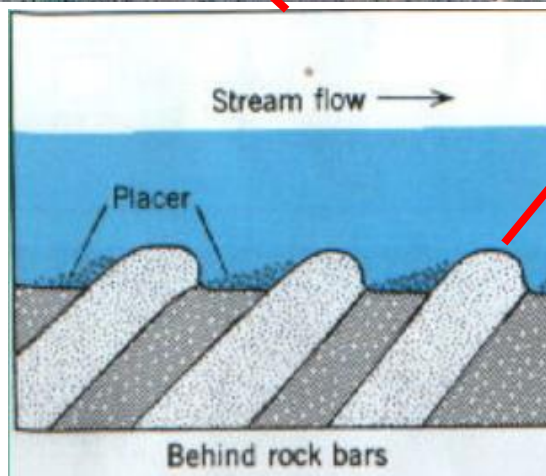
Artisanal Workings on the Lurio River Bed – Nehaniani Village



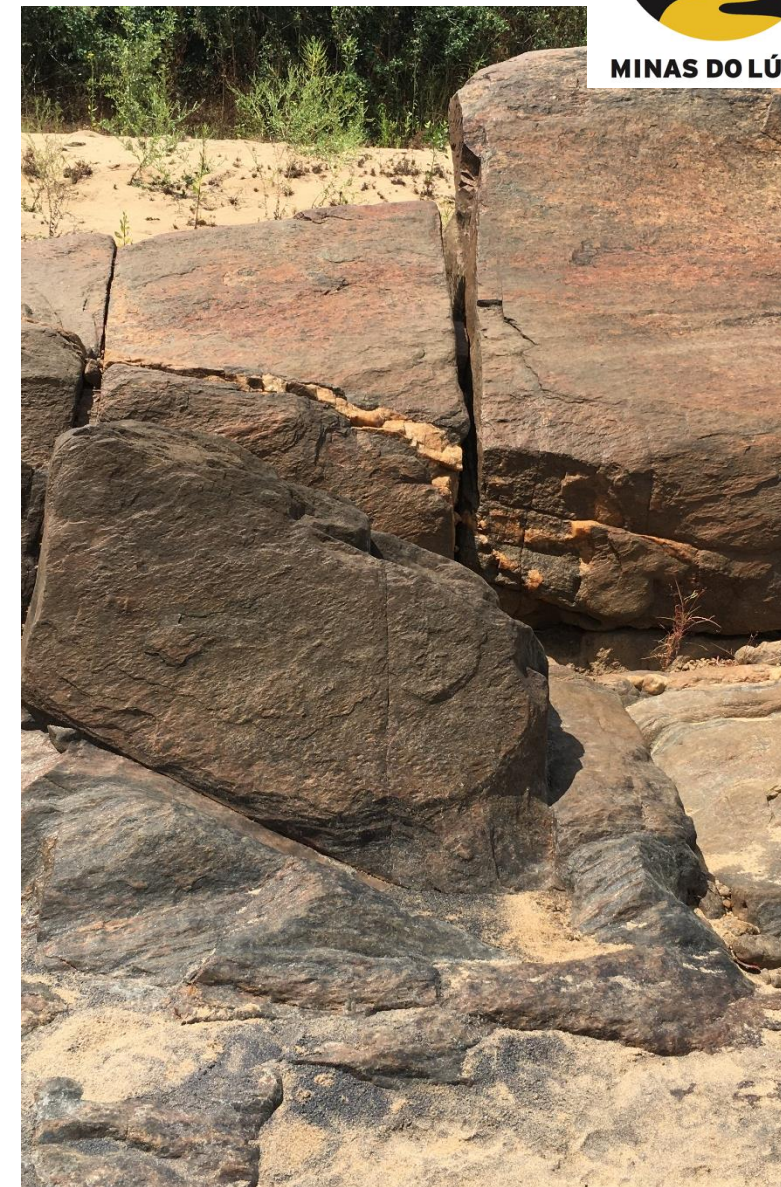
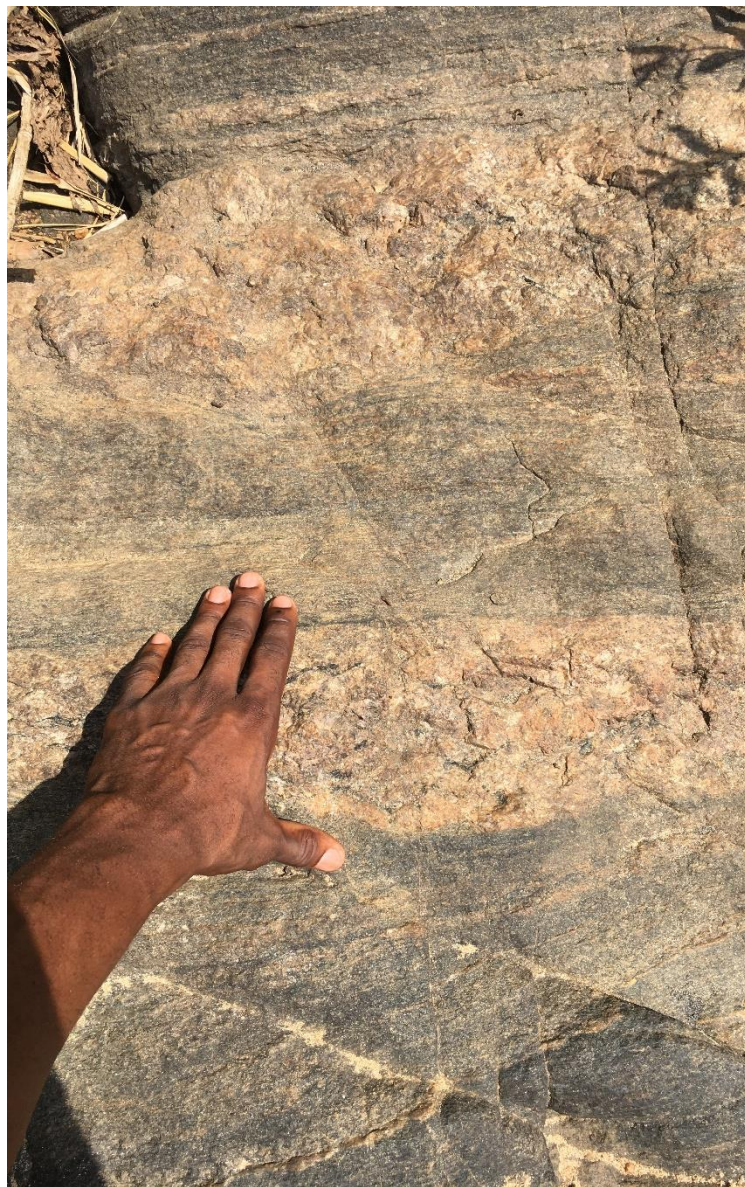
MINAS DO LÚRIO



The dipping granulite gneiss rocks outcrops along some sections of the Lurio river also work as “traps” for the accumulation of gold, however where the surface of the bedrock is highly irregular, the distribution of gold will be spotty, but a natural riffle like surface favors accumulation.



Numerous quartz veins outcrops on the river bed and on the slopes close to the workings





The black sand extracted and washed by the locals, is mostly comprised with fine to coarse fragments of quartz veins and other heavy metals. Fragments that may have been eroded from the surrounding QV's in the granulite gneiss matrix. "Flakey" aspect of the gold also suggests a close source.



Chapala Site

In Chapala Site, our team sought to intercept new mineralized zones along the known NW-SE trend, and possible higher grades pockets by opening new shafts, collecting bulk samples for processing and select next potential sampling targets for lab submission.



Chapala Site



Gold S
MINAS DO LÚRIO
Quartz Veins



Chapala Site

X: 623902
 Y: 8505895

New shaft on NW
 with 4-5cm Qv's
 in amphibolite Gneiss
 Matrix

0,5m composite
 channel

19Kg Qv
 +
 Host
 Rock



Results of bulk processing of
 the samples from new
 shafts recently opened
 following the NW-SE trend.
 Next potential sampling
 targets for lab submission

X: 623916
 Y: 8505871

Qv's following the
 NW-SE direction
 of the Mineralisation
 The Qv's tends to
 shrink towards SE.

Qv + Contact
 Rock

7Kg ● Cat 1



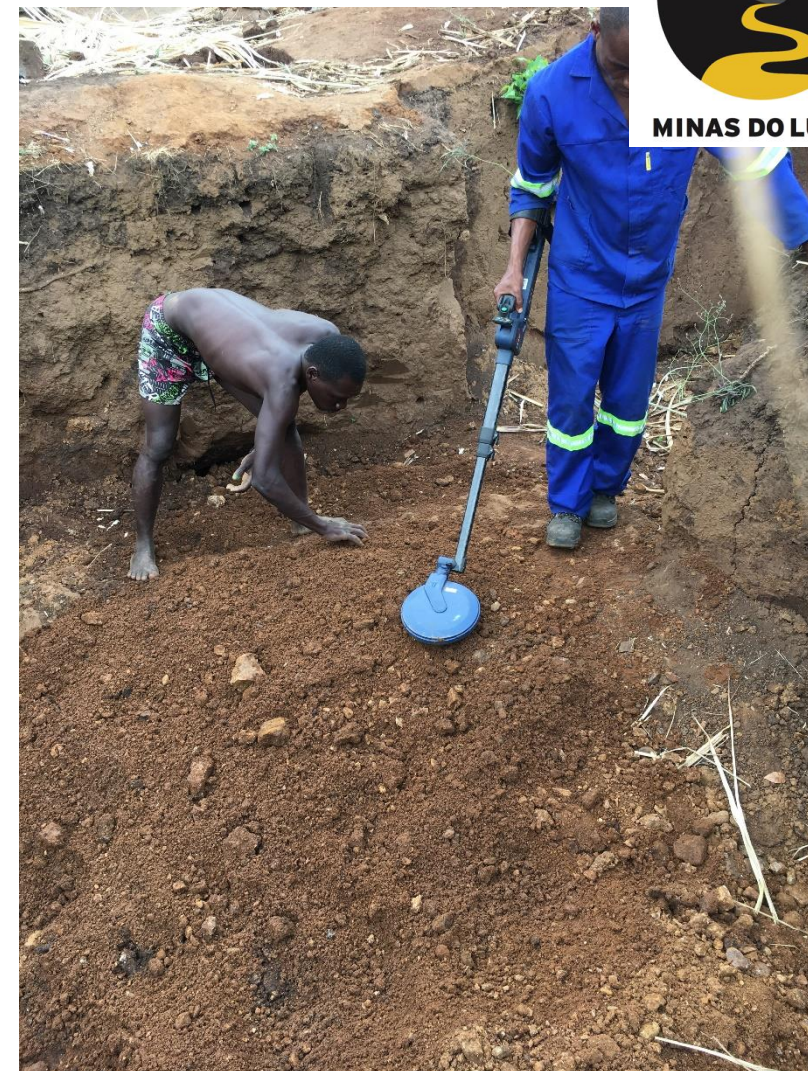
Chapala Site



MINAS DO LÚRIO

47 m Lateral Extension of Confirmed Mineralization
Along The NW-SE Trend

Sapala AU Alluvial Site



About 600m from Sapala hard-rock source, we have a ancient river channel, where the artisans claim to have found hand picked 1 g gold nuggets, for few times.

Sapala AU Alluvial Site



MINAS DO LÚRIO

